

BOM Table					
ITEM NO.	PART NUMBER	Rev.	Description	Material	QTY.
1	WH-32P	-	MOUNTING PANEL	AL 5052-H32	1
2	SCREWS-008	-	M5X0.8 X 10mm PAN HEAD, POZI, TRILOBULAR DIN 7500C SCREW	STEEL	4

REV.	DESCRIPTION	ZONE	BY	APPR'D	DATE
REVISIONS					

UNLESS OTHERWISE SPECIFIED:
DIMENSIONS ARE IN: INCHES [mm]
TOLERANCES: ANGULAR: ±2°
TWO PLACE DECIMAL: ±.010
THREE PLACE DECIMAL: ±.005
PRINTED GRAPHICS: ±.010

PROPRIETARY AND CONFIDENTIAL
THE INFORMATION CONTAINED IN THIS
DRAWING IS THE SOLE PROPERTY OF
POLYCASE. ANY REPRODUCTION IN PART
OR AS A WHOLE WITHOUT THE WRITTEN
PERMISSION OF POLYCASE IS PROHIBITED.
CAD FILE: WH-32K

PART NO. WH-32K		
MATERIAL		
FLAME RATING		
DRAWN	NAME	DATE
CHECKED	C.C.B.	3/18/2020

1305 CHESTER IND. PARKWAY AVON, OHIO 44011-1083 U.S.A.
PH#: 1-800-248-1233, 440-934-0444 FAX#: 440-934-0088

polycase

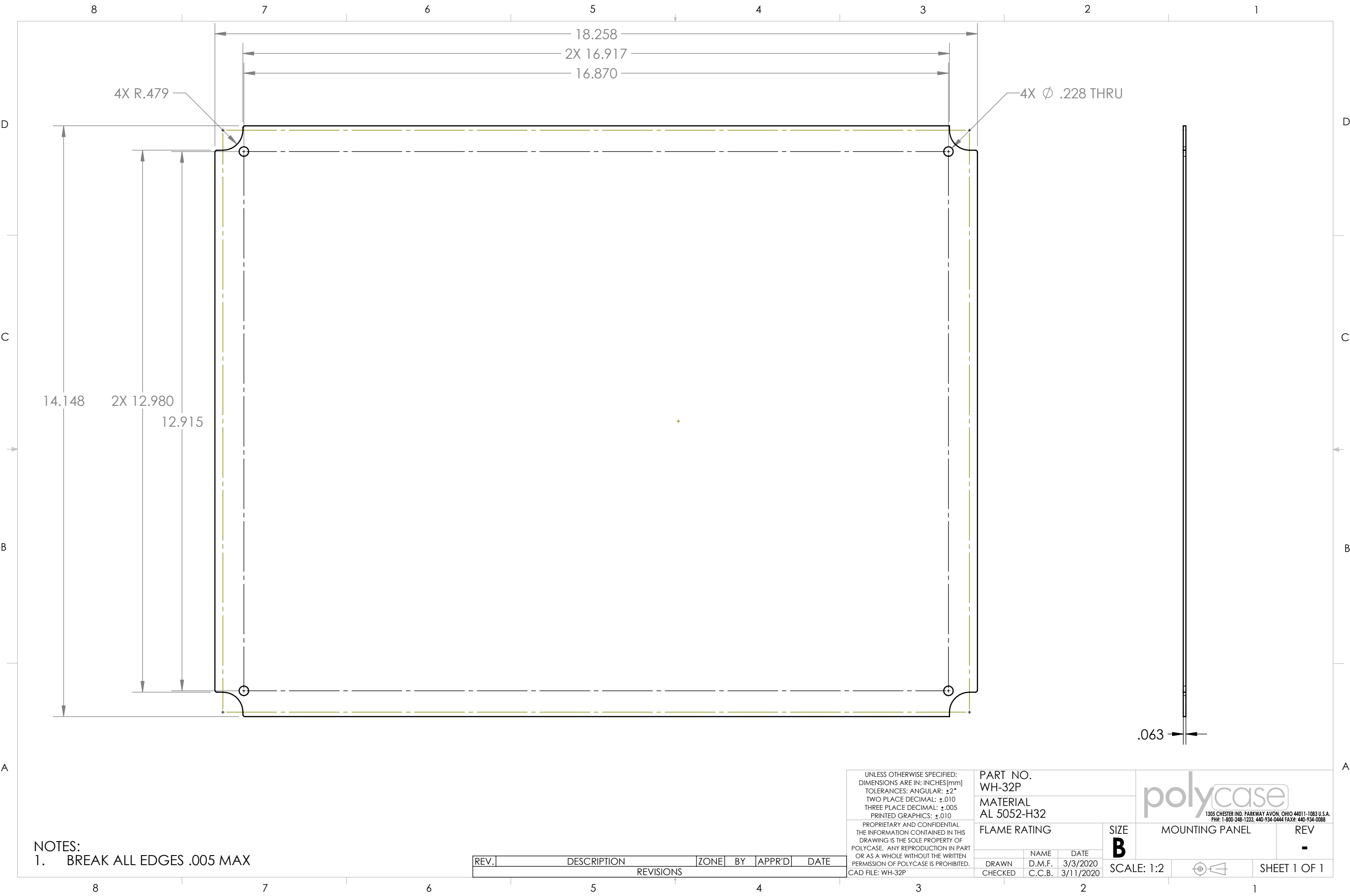
MOUNTING PANEL KIT

REV
-

SIZE
B

SCALE: 1:3

SHEET 1 OF 1



NOTES:
1. BREAK ALL EDGES .005 MAX

REV.	DESCRIPTION	ZONE	BY	APPR'D	DATE
REVISIONS					

UNLESS OTHERWISE SPECIFIED:
DIMENSIONS ARE IN: INCHES [mm]
TOLERANCES: ANGULAR: $\pm 2^{\circ}$
TWO PLACE DECIMAL: $\pm .010$
THREE PLACE DECIMAL: $\pm .005$
PRINTED GRAPHICS: $\pm .010$

PROPRIETARY AND CONFIDENTIAL
THE INFORMATION CONTAINED IN THIS
DRAWING IS THE SOLE PROPERTY OF
POLYCASE. ANY REPRODUCTION IN PART
OR AS A WHOLE WITHOUT THE WRITTEN
PERMISSION OF POLYCASE IS PROHIBITED.

CAD FILE: WH-32P

PART NO. WH-32P		
MATERIAL AL 5052-H32		
FLAME RATING		SIZE B
DRAWN	NAME	DATE
CHECKED	C.C.B.	3/11/2020

1305 CHESTER IND. PARKWAY AVON, OHIO 44011-1083 U.S.A.
PH#: 1-800-248-1233, 440-934-0444 FAX#: 440-934-0088

MOUNTING PANEL		REV -
SCALE: 1:2		SHEET 1 OF 1